

# HERA & DIAS

Two residential buildings in the area of Dikastiria (the Court House) in Chania - 16 apartments.

## Presentation of HERA building – 7 apartments





13 KM



CHANIA  
INTERNATIONAL  
AIRPORT

(25 min by car)

7 KM



SOUDA SEAPORT

ANEK - MINOAN  
(10 min by car)

1 KM



CHANIA CENTER

Municipal Market  
of Chania  
(5 min by car)

1 KM



SPORTS FACILITIES

- Basketball court
- Children's playground

550 M.



BEACH

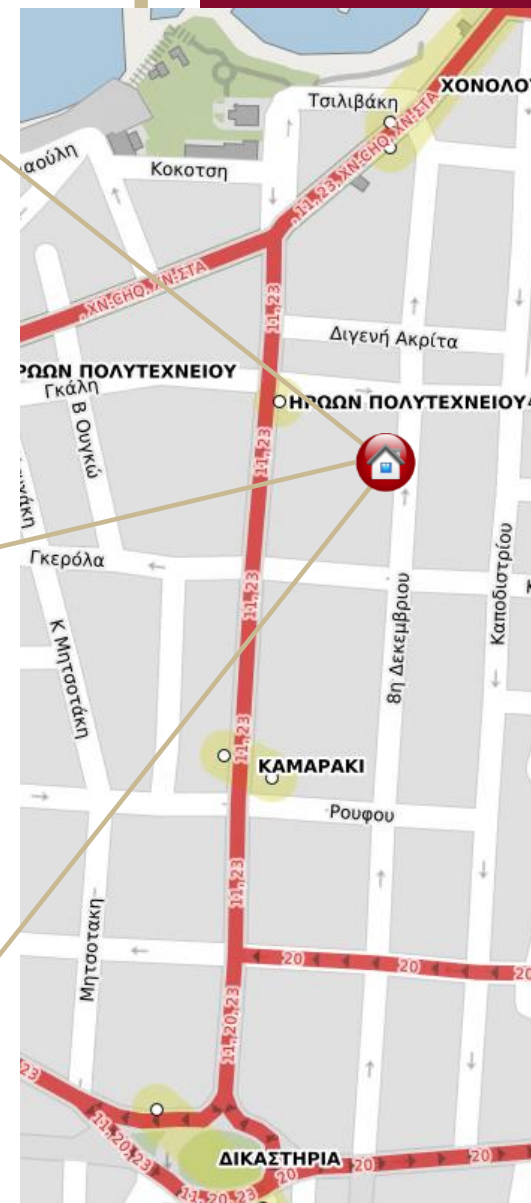
- Koum - Kapi

300 M.



CLOSE SHOPS

- Super Market
- Pharmacy
- Bakery





## DETAILED INFORMATION

# HERA & DIAS

Modern apartments near the city center of Chania



[Click here to open Google Map in a web-browser](#)

**Hera & Dias** is situated in a really privileged location near the center of Chania. It is picturesque and ideal for families as it will remind you of the tranquility of the area. In the vicinity you will find: kindergartens, schools, pharmacies, restaurants, health care facilities, shops and other places of interest.

To be more precise, the **Hera & Dias** project is divided into two buildings:

- The **Hera** building has **5 floors** and consists of **7 apartments**.
- The **Dias** building has **6 floors** and consists of **9 apartments** of high aesthetics and decoration.

In addition to the excellent construction standards that apply to all of our developments, the buildings will have the following features:

- *A+ energy class*
- *Thermal performance*
- *Energy efficient windows*
- *Pre-installation of alarm systems*
- *Fun Coil units*
- *Italian tiles*
- *Kitchen furniture*

**Notes:** *The storage spaces in the basement are not included in the price. Storage spaces can be purchased at an additional cost upon request.*

Construction is due to commence on the **1st of May 2023** and completion of the project will be by **the end of May 2024**.

It is ideal for families as well as for investment purposes.



■ ABOUT



## Basic elements of the HERA building:

The building has a single entrance with a lift. It has four floors, one pilot floor for parking and also have a basement.

The building has a conventional rectangular shape. It is symmetrical on both sides.

Total area of the building: **643,84 m<sup>2</sup>**

Total number of apartments - **7** (3 one-bedroom apartments, 3 three-bedroom apartments and 1 four-bedroom apartment)

**Basement: 163,99 m<sup>2</sup>** (consists of 9 storage facilities).

**The pilot of the building** has parking spaces for each apartment (1 space/apartment)

**First floor: 163,99 m<sup>2</sup>**

- Apartment **A1: 65,48 m<sup>2</sup>** (2 rooms: open plan living room and kitchen | 1 bedroom | 1 bathroom)
- Apartment **A2: 98,51 m<sup>2</sup>** (3 rooms: open plan living room and kitchen | 2 bedrooms | 2 bathrooms)

**Second floor: 163,99 m<sup>2</sup>**

- Apartment **A3: 65,48 m<sup>2</sup>** (2 rooms: open plan living room and kitchen | 1 bedroom | 1 bathroom)
- Apartment **A4: 98,51 m<sup>2</sup>** (3 rooms: open plan living room and kitchen | 2 bedrooms | 2 bathrooms)

**Third floor: 163,99 m<sup>2</sup>**

- Apartment **A5: 65,48 m<sup>2</sup>** (2 rooms: open plan living room and kitchen | 1 bedroom | 1 bathroom)
- Apartment **A6: 98,51 m<sup>2</sup>** (3 rooms: open plan living room and kitchen | 2 bedrooms | 2 bathrooms)

**Fourth floor: 151,87 m<sup>2</sup>**

- Apartment **A7: 151,87 m<sup>2</sup>** (4 rooms: open plan living room and kitchen | 3 bedrooms | 3 bathrooms | storage room)

# BENEFITS

---



**HIGH QUALITY OF CONSTRUCTION**



**FINAL FINISHING WITH THE KEY IN HAND**



**100% COMPLETED BY MAY 2024**



**A UNIFIED ARCHITECTURAL CONCEPT  
EUROPEAN STYLE**



**LANDSCAPED AREA**



**GOOD TRANSPORT CONNECTIONS**



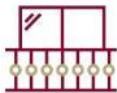
**DEVELOPED INFRASTRUCTURE**



**A CHOICE OF 1, 2 OR 3 BEDROOMS**



**ALL CONNECTED SOCIAL  
NETWORKING**



**BALCONIES WITH DECORATIVE PROTECTIVE  
GLASS**



**PARKING SPACE FOR ALL APARTMENTS**



**CLOSE TO THE SEA**

---

# BASICS

# PROJECT FEATURES ■



**NUMBER OF BUILDINGS:**  
**2**



**WALLS:**  
**MINOAN ORTHOBLOCK**



**NUMBER OF APARTMENTS:**  
**7 – (HERA)**



**HEIGHT OF FLOOR:**  
**2,90 M (FROM FLOOR TO FLOOR)**



**EXTERIOR INSULATION:**  
**THERMOPROSPECT**



**AIR CONDITIONERS:**  
**FAN COIL SPLIT UNIT**  
HEATING AND COOLING WITH A SINGLE SYSTEM



**LEVELS:**  
**5 & 6**



**CONSTRUCTION TECHNOLOGY:**  
**MONOLITHIC CONSTRUCTION**



**SOUND INSULATION:**  
**ALUMINIUM FRAMES WITH THERMAL BREAK**



**LIFT:**  
**GROUND PARKING FLOOR – COMMON AREAS**



**KITCHEN AND WARDROBE:**  
**SPECIALLY DESIGNED**



**ENERGY EFFICIENCY:**  
**A+**





# 3D OUTDOOR DESIGN











# 3D INTERIOR DESIGN







# PLANS

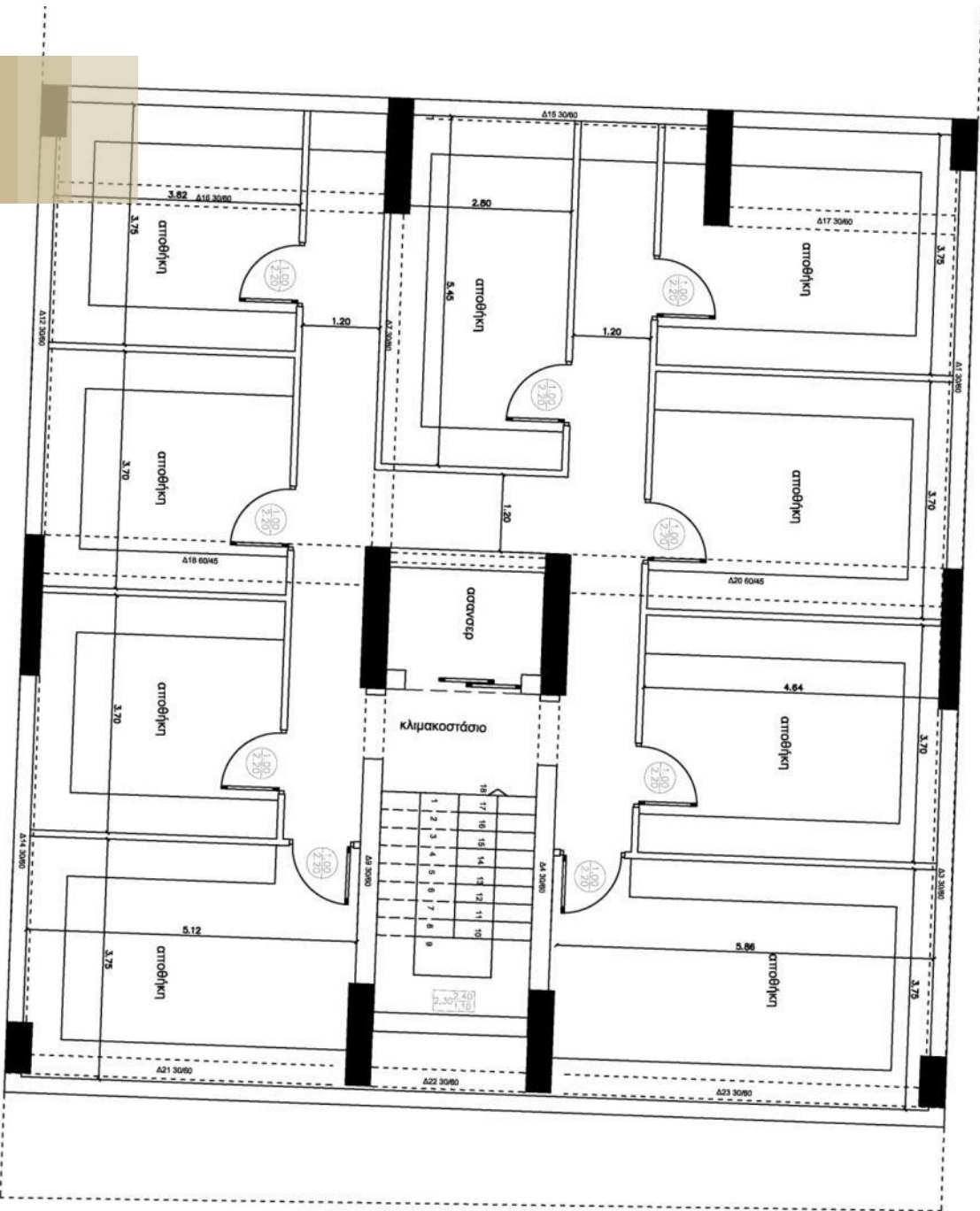
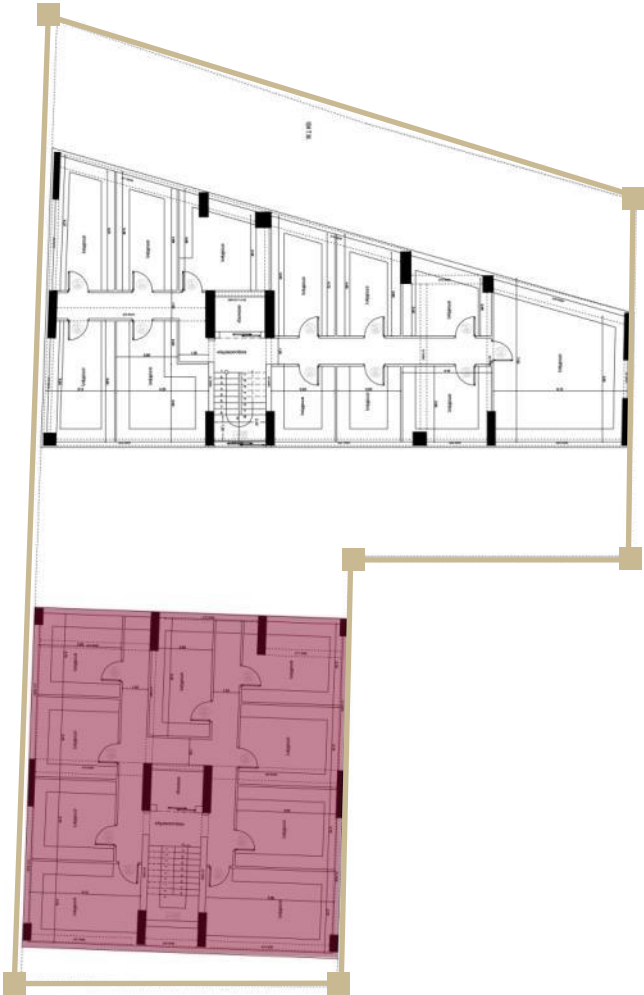




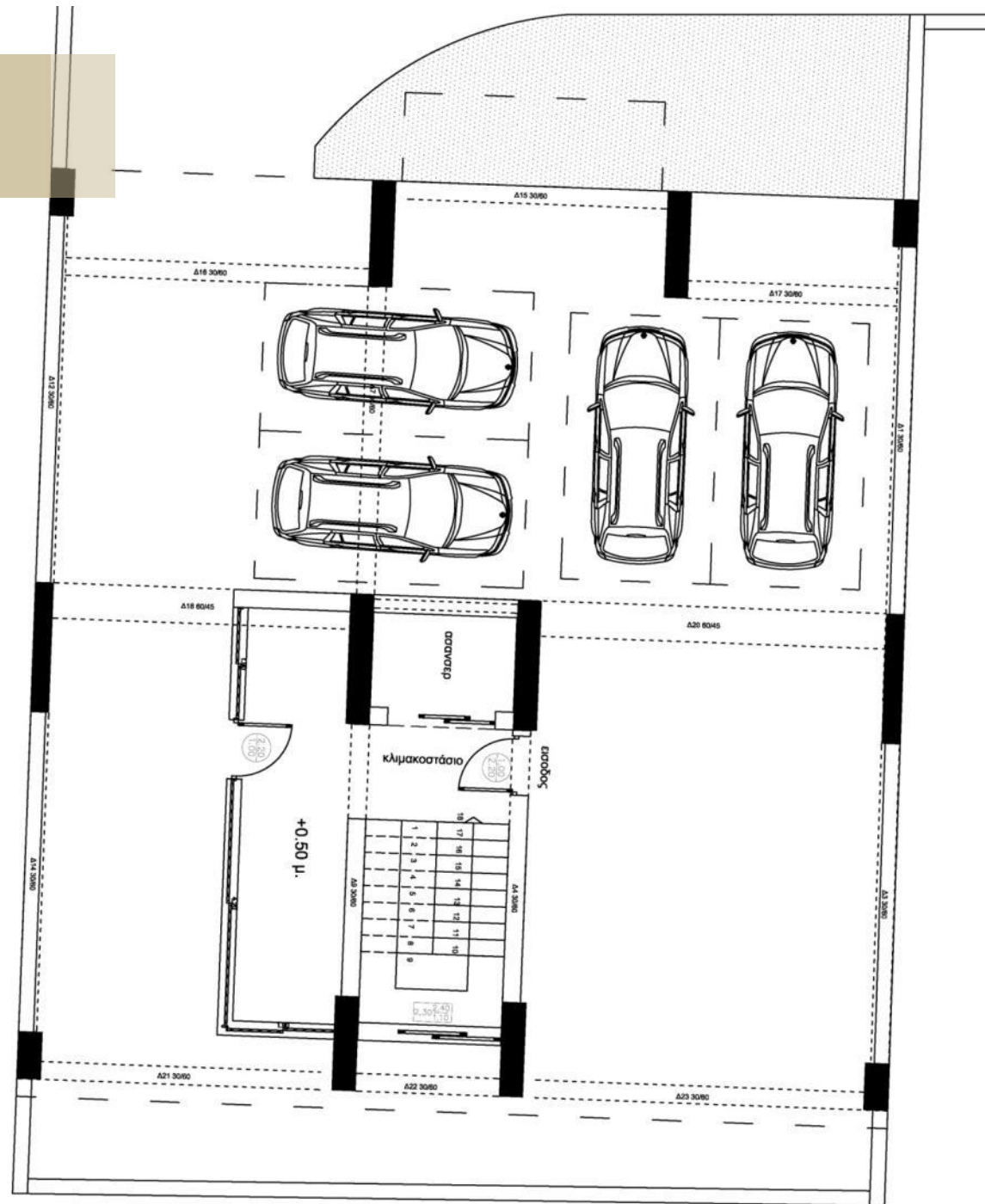
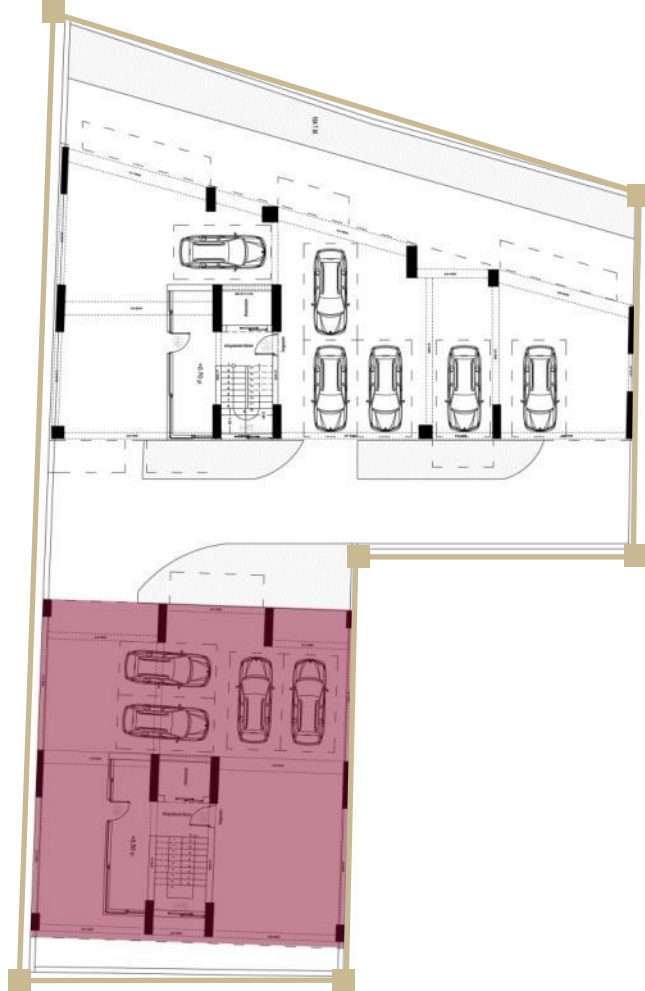
# GENERAL PLAN



BASEMENT (STORAGES)

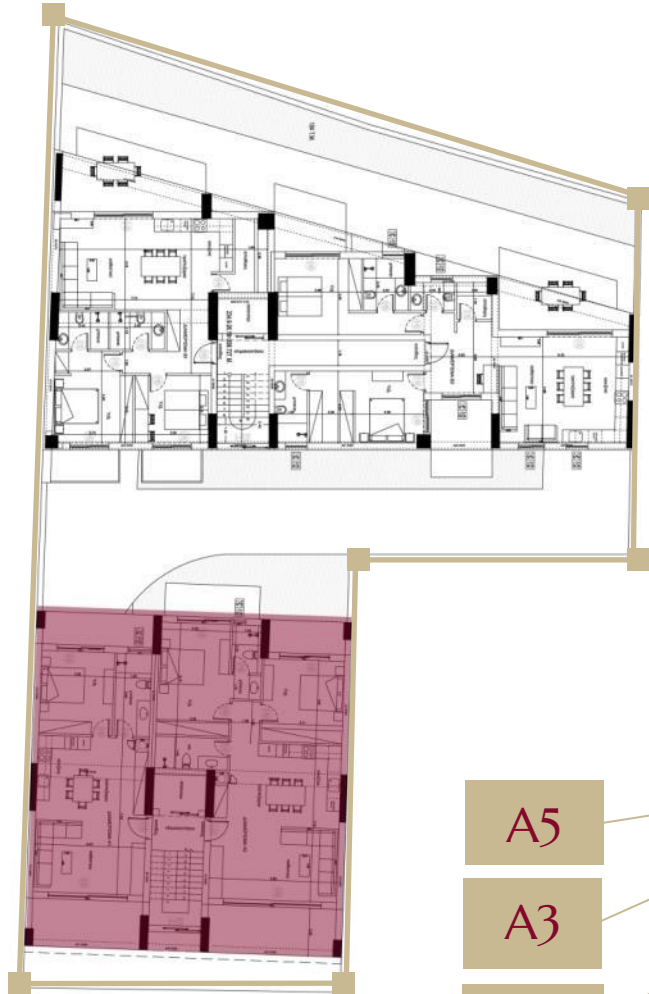


## PILOT LEVEL (PARKING AREA)





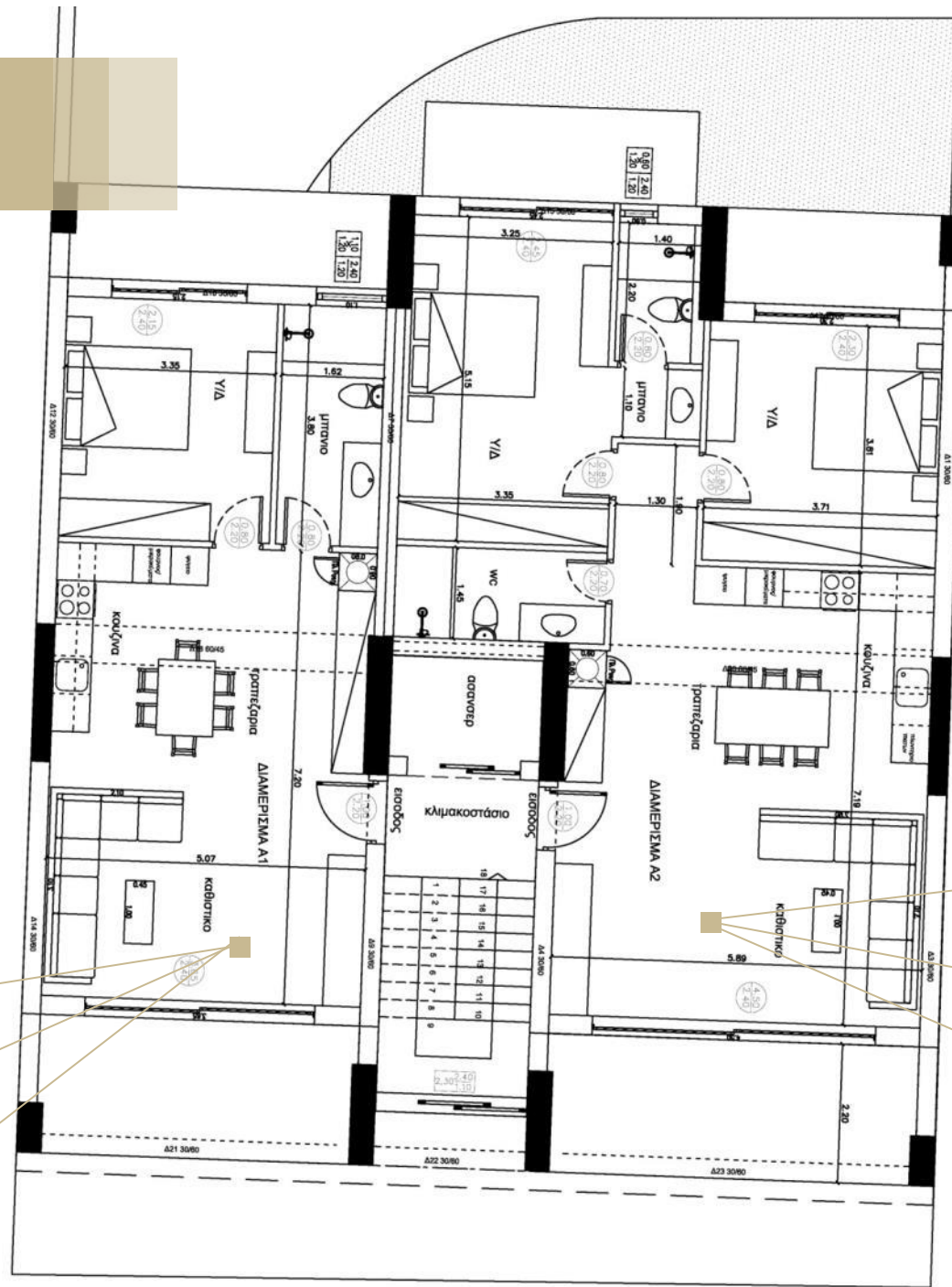
# LEVELS 1, 2, 3



A5

A3

A1



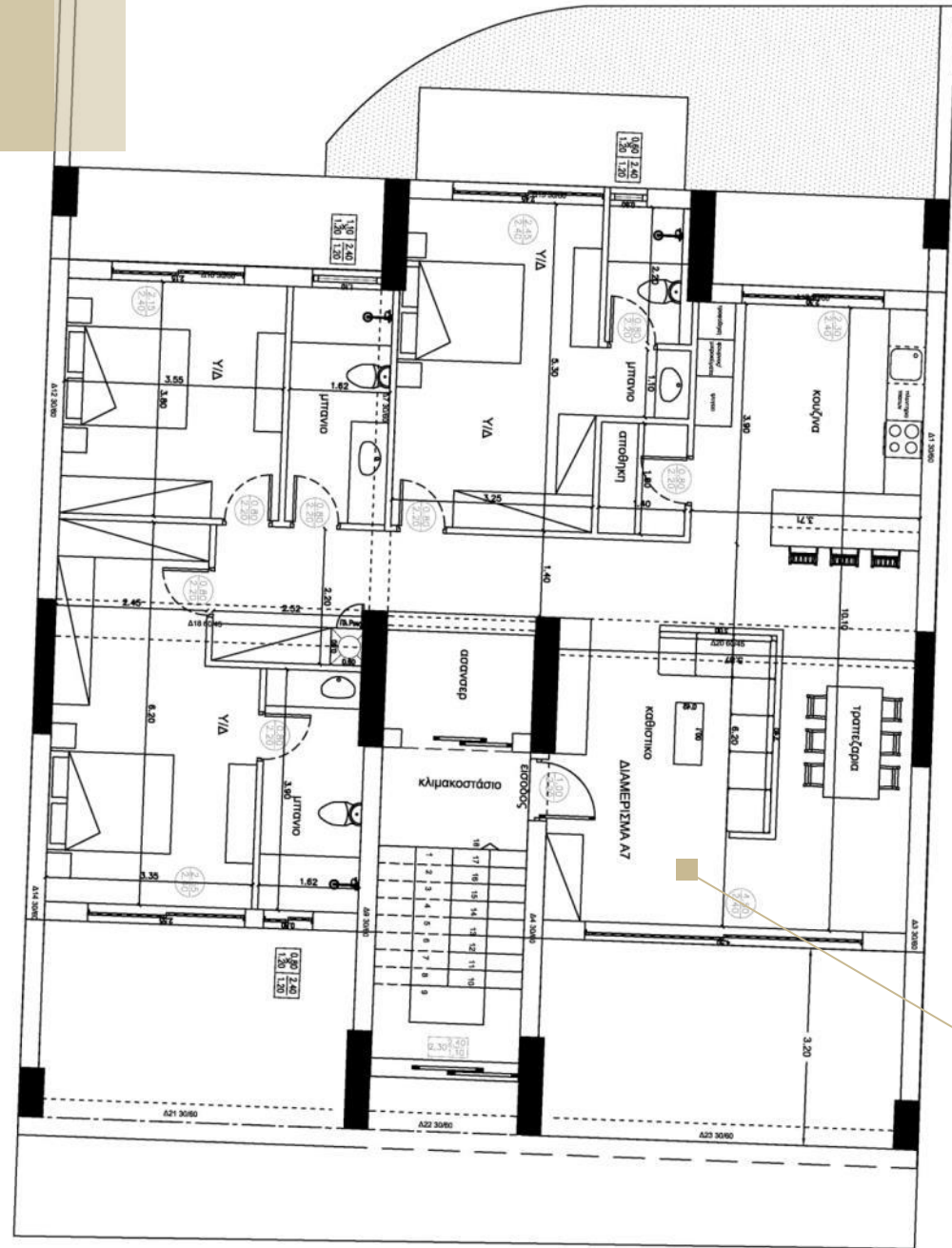
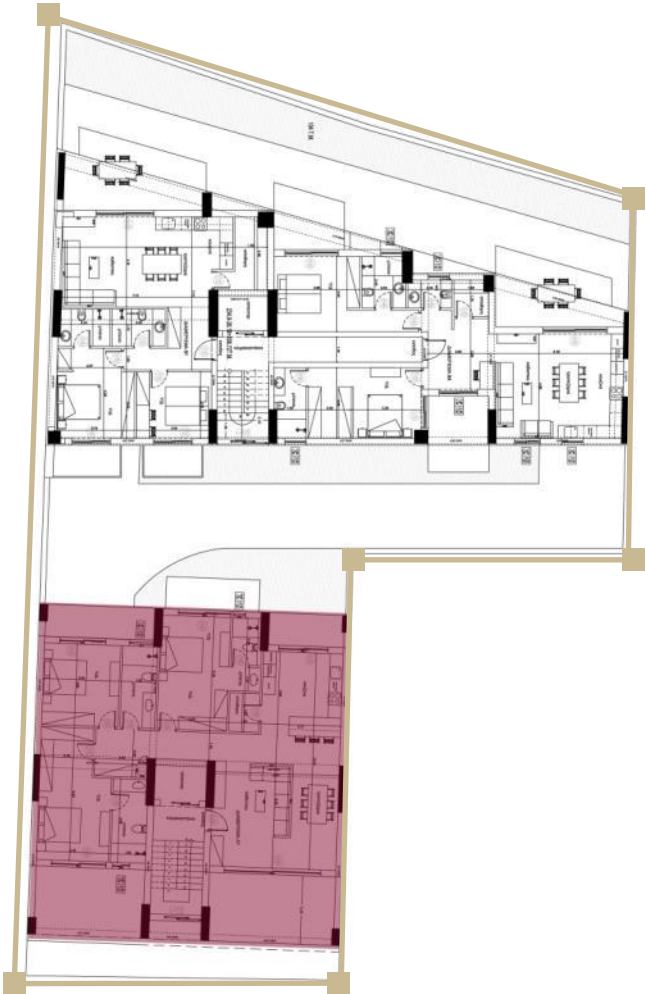
A6

A4

A2



# LEVEL 4



A7

BUILDING	APARTMENTS	M <sup>2</sup> WITH WALLS	M <sup>2</sup> BALCONIES	PRICE PER M <sup>2</sup>	SALE PRICE
HERA	APARTMENT A1	65,48 m <sup>2</sup>	20,53 m <sup>2</sup>	3.360 €	220.000 €
	APARTMENT A2	98,51 m <sup>2</sup>	25,87 m <sup>2</sup>	3.350 €	330.000 €
	APARTMENT A3	65,48 m <sup>2</sup>	20,53 m <sup>2</sup>	3.570 €	235.000 €
	APARTMENT A4	98,51 m <sup>2</sup>	25,87 m <sup>2</sup>	3.560 €	350.000 €
	APARTMENT A5	65,48 m <sup>2</sup>	20,53 m <sup>2</sup>	3.780 €	250.000 €
	APARTMENT A6	98,51 m <sup>2</sup>	25,87 m <sup>2</sup>	3.770 €	375.000 €
	APARTMENT A7	151,87 m <sup>2</sup>	58,25 m <sup>2</sup>	3.950 €	600.000 €
DIAS	APARTMENT B1	95,73 m <sup>2</sup>	30,57 m <sup>2</sup>	3.950 €	300.000 €
	APARTMENT B2	112,08 m <sup>2</sup>	36,07 m <sup>2</sup>	3.950 €	350.000 €
	APARTMENT B3	95,73 m <sup>2</sup>	30,57 m <sup>2</sup>	3.950 €	320.000 €
	APARTMENT B4	112,08 m <sup>2</sup>	36,07 m <sup>2</sup>	3.950 €	375.000 €
	APARTMENT B5	95,73 m <sup>2</sup>	30,57 m <sup>2</sup>	3.950 €	350.000 €
	APARTMENT B6	112,08 m <sup>2</sup>	36,07 m <sup>2</sup>	3.950 €	410.000 €
	APARTMENT B7	95,73 m <sup>2</sup>	30,57 m <sup>2</sup>	3.950 €	380.000 €
	APARTMENT B8	112,08 m <sup>2</sup>	36,07 m <sup>2</sup>	3.950 €	445.000 €
	APARTMENT B9	162,32 m <sup>2</sup>	59,61 m <sup>2</sup>	3.950 €	670.000 €

**R E S E R V E D**

■ **FOR MORE INFORMATION**



**Contact us**



**info@kyriakidis.eu**



**+30 698 643 8965**



**www.kyriakidis.eu**



■ **THANK YOU!**